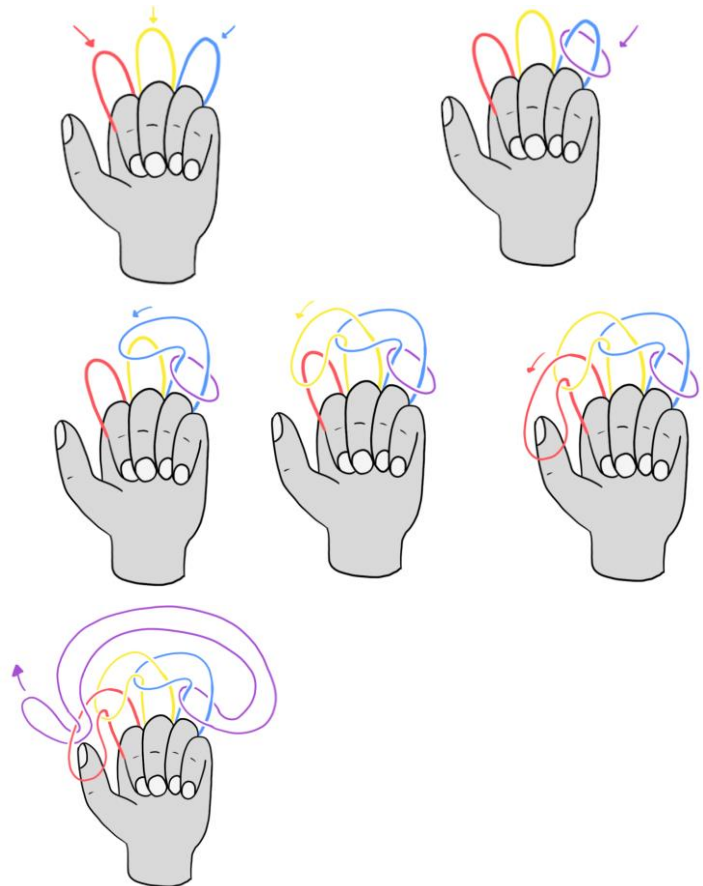


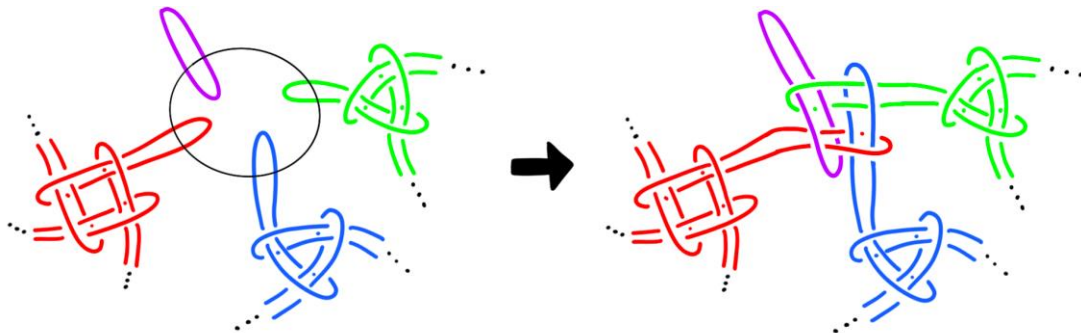
Ti-Links Instructions

How to make a module:

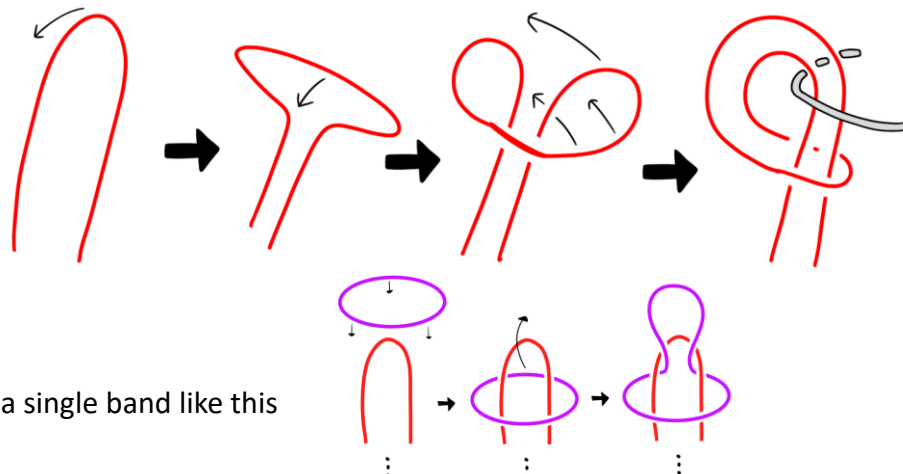
1. Put one finger through each band (two or three in total). Then load a new band over the one farthest to the right.
2. One at a time, from right to left, pull each band over the next. Store the last band on your thumb.
3. Pull the band you loaded through the band you stored on your thumb. Tighten the link and you're done!



How to connect the modules: use the same technique on the free ends.



How to complete the link: make a "Cow Hitch" at each free end, pass a binder ring through them.



You can also add just a single band like this

